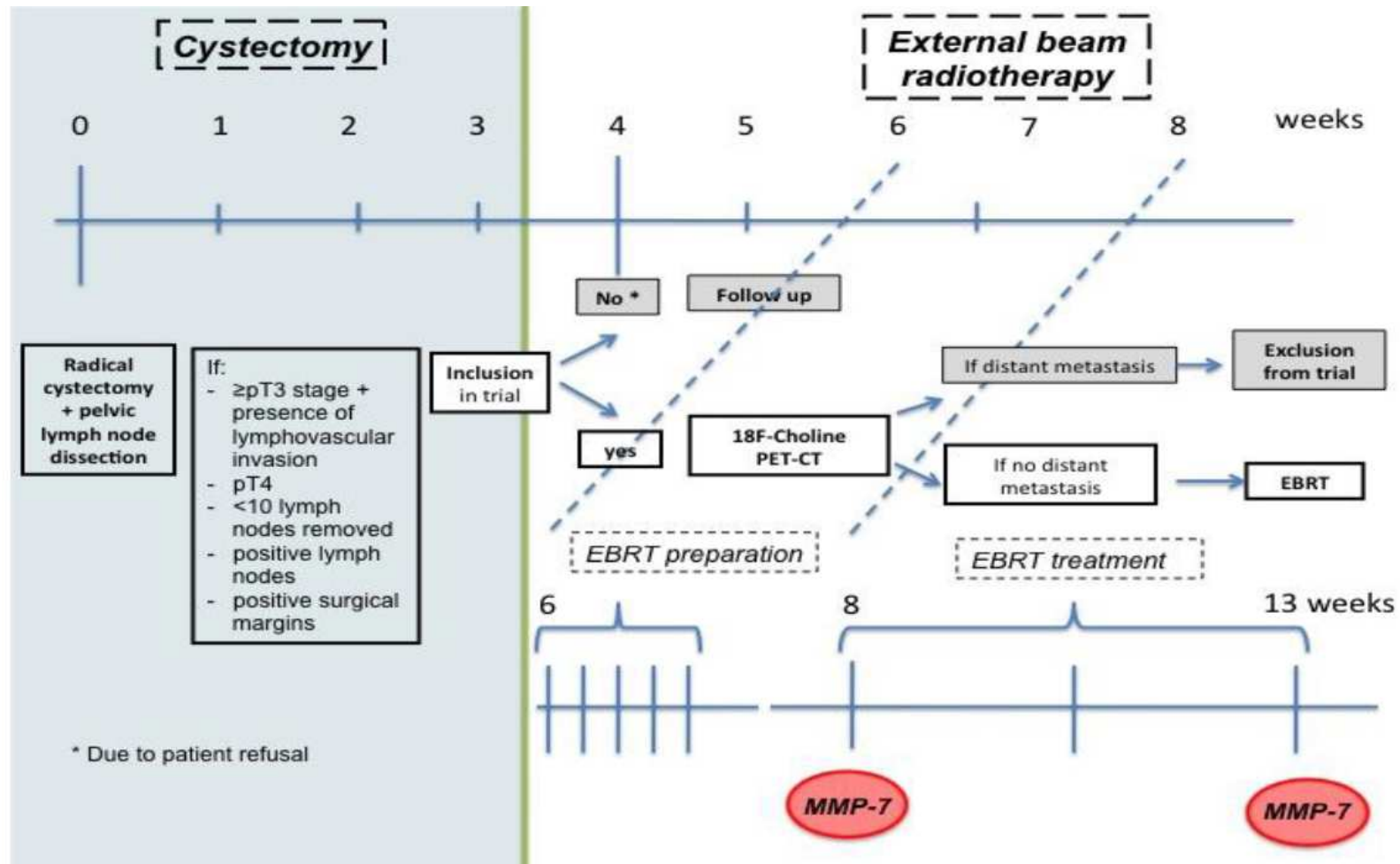




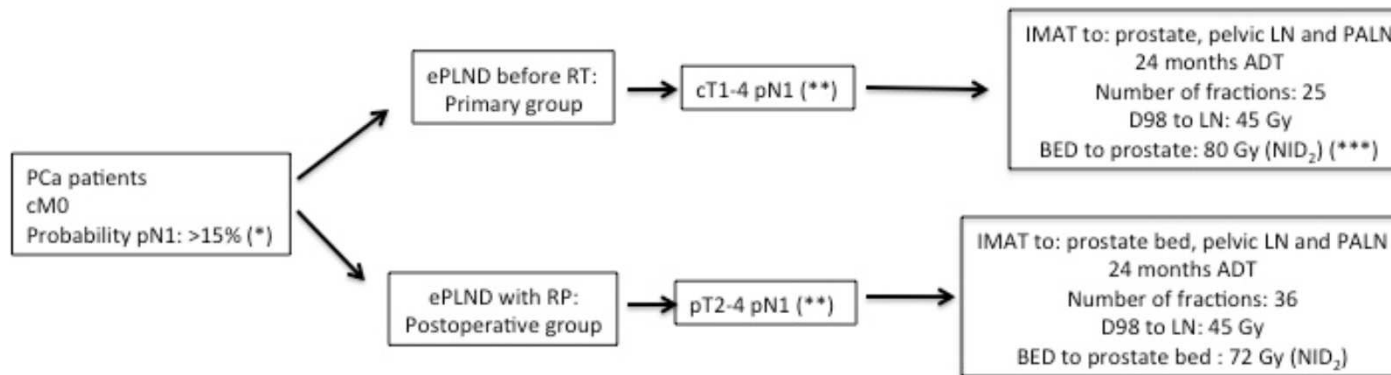
Studies in de uro-RT binnen Iridium



Adjuvant radiotherapy after cystectomy for patients with muscle invasive bladder cancer: a phase II trial.



Elective Para-Aortic Radiotherapy (PART) for pN1 prostate cancer: a phase 2 trial using Arc Therapy.



(*): Roach formula

(**): pN+ defined as:

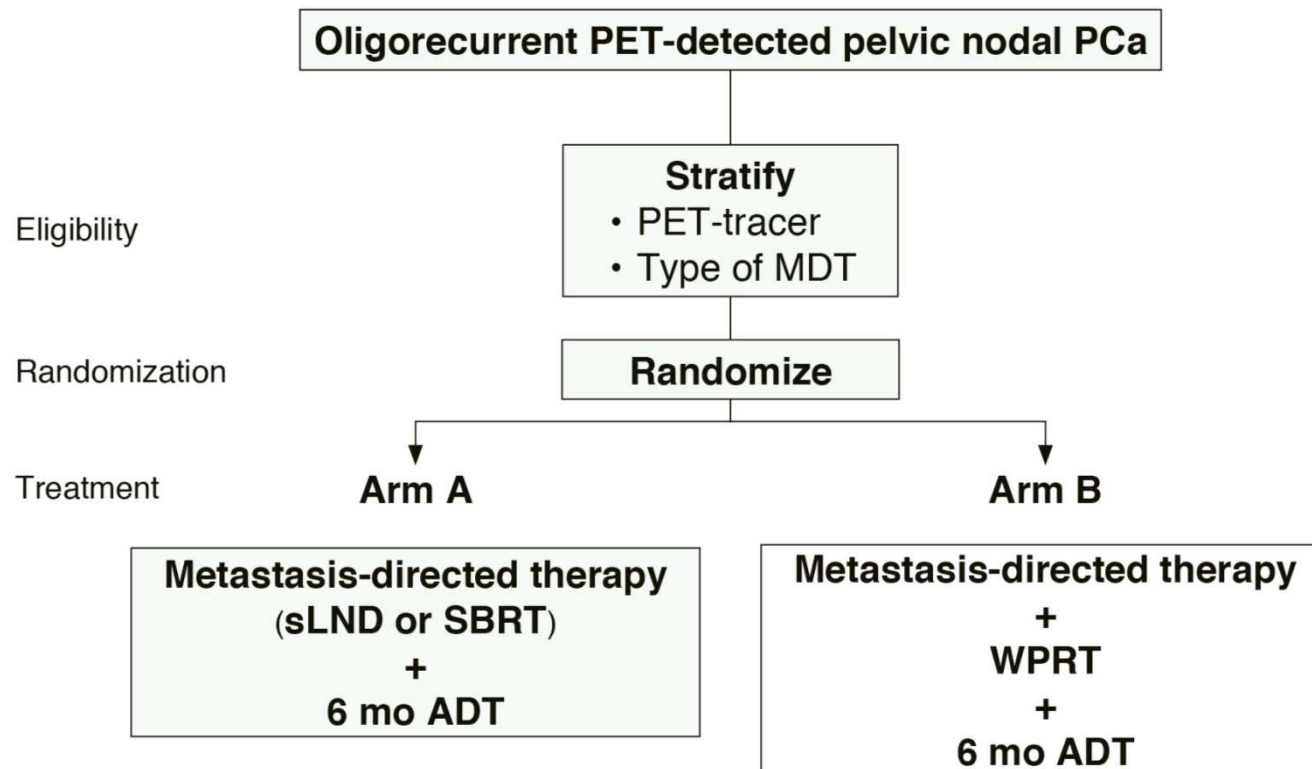
- 2 or more positive LN
- Ratio positive LN/number of LN removes >7%
- Presence of extracapsular extension.

(***): Normalized iso-effective dose @ 2 Gy per fraction

Endpoints:

- Primary: **Clinical relapse-free survival (cRFS) defined as the absence of cR at biological imaging.**
- Secondary:
 - Acute and late toxicity: genito-urinary, gastro-intestinal and hematological toxicity.
 - Quality-of-life using EORTC QLQ-C30, EORTC PR25 and EQ-5D-5L.
 - Time to palliative ADT initiation.
 - Time to castration-refractory prostate cancer .
 - Cause-specific survival and overall survival.
 - In-field pelvic and PA disease control.

PEACE V: a randomized phase III trial for the salvage treatment of oligo-recurrent nodal prostate cancer metastases (STORM).





CONTACT



Caroline Schwarzer: 03/4433759 of caroline.schwarzer@gza.be